

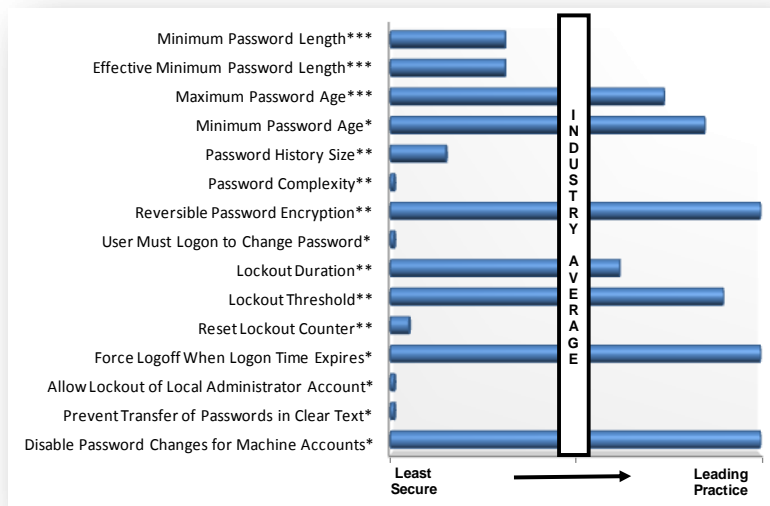
## Product and Service Overview

### What is SekChek?

SekChek® is a family of automated security analysis and benchmarking tools initially designed for use by audit firms and their clients. It measures computer security against leading international security standards and real-life averages by industry sector.

SekChek features:

- Comprehensive reporting on system-based security controls, not sample-based;
- An independent assessment of security against international standards;
- Bench-marking against 50 million individual security measurements and industry averages for security compiled from more than 70,000 systems in 120 countries;
- 24-hour turnaround time;
- Minimal client intervention and technical expertise;
- No need to purchase and maintain expensive software – pay per single use or via a multi-use discount subscription.



The tool produces an easy to read report in both text and graphical format, which highlights deviations from leading international security practices as well as real-life industry averages.

It also details security exposures and their implications, and prioritizes recommended actions to correct deficiencies.

SekChek also permits you to substitute your own internal security standards as benchmarks.

### How will this tool benefit my organization?

SekChek reports help security administrators, IS managers, consultants and audit personnel to quickly identify problem areas and compare their security settings against leading practices and real-world averages. A SekChek summary report alerts management to overall exposure from potential computer system security and network weaknesses. The summary also prioritizes corrective recommendations.

A multi-page, detailed report for audit, QA and IS staff indicates:

- Identified security weaknesses
- Security implications of each identified weakness
- A risk rating of low to high
- Recommended actions

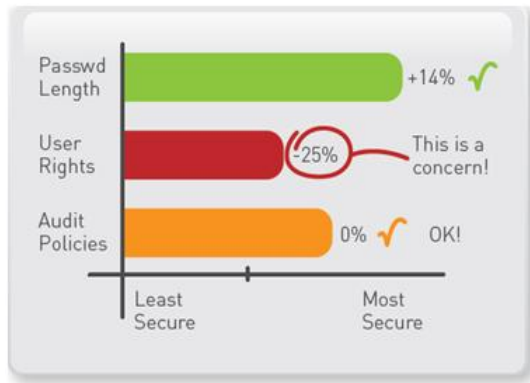
Reports provide comparative analyses by benchmarking your system against other companies within your industry, enabling you to adjust your security settings according to industry practices.

## When should I use the tool?

SekChek is a security assessment tool well suited to the following applications:

- Performing the information security part of an audit's General Controls Review (GCR);
- Highlighting deviations from generally accepted international security standards;
- Detailing security exposures and their implications;
- Prioritizing recommended actions to correct deficiencies;
- Conducting tests of controls and evaluating effectiveness;
- Measuring whether security has strengthened or weakened since the previous analysis.

One of SekChek's exciting features is its ability to quickly highlight changes in security.



The tool can provide you with a collection of easy-to-read reports in a familiar format containing visual indicators of:

- Whether security has improved, weakened, or remained about the same since your previous analysis;
- The effectiveness of your measures to strengthen controls;
- Whether risk is increasing or decreasing;
- The degree of change, both positive and negative.

The benefits and applications are numerous: time savings; increased objectivity; monitoring compliance with legislation and statutory requirements; and the ability to present more powerful and convincing arguments to senior, non-technical management.

## Other indicators for using the tool?

SekChek is equally cost-effective at performing security assessments in the following circumstances:

- To evidence successful implementation of new organizational Computer Security Policies;
- To review compliance with recommended security practices issued by government regulators and legislation, such as SOX and HIPAA;
- To confirm expected/mandated security measures are reinstated after significant IT upgrades;
- To compare consistency of company-wide security practices to corporate security benchmarks;
- To take a secure snapshot of system security controls for use in forensic investigations

## How does the tool work?

SekChek runs on all current versions of OS/400, Windows (NT to 2012), Active Directory, UNIX variants (e.g. AIX, HP-UX, Linux, Red Hat, Solaris, SCO) and Novell / Netware.



Security data is scanned on the target system, encrypted and sent to the SekChek team for processing.

The SekChek team processes the Scan file offline and generates comprehensive reports – both summary and detailed - in standard word processor format.

Your report is securely encrypted and promptly returned to you.

Reports detail prioritized recommendations to help mitigate logical security exposure risks. SekChek guarantees a 24-hour report turnaround time.

SekChek processing is very secure ensuring uncompromised confidentiality of client data.

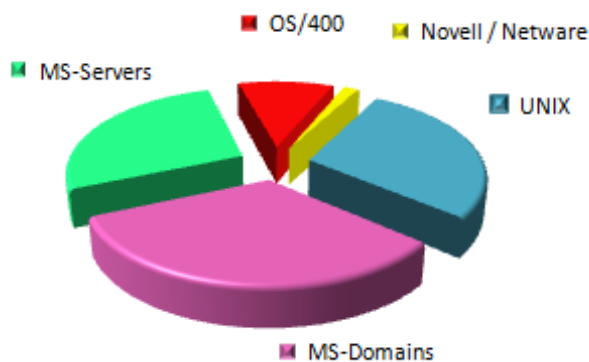
## What impact will SekChek have on my system?

From the very outset SekChek was designed to be non-intrusive, make zero changes to the host/target system, and leave no trace behind after the Extract process has completed.

Unlike most products, there is no requirement to setup or install SekChek on the target system and no dependence on software agents.

## What are the most common platforms analyzed by SekChek?

Usage by Product



This comparison represents the proportion of system platforms reviewed by SekChek from 2006 to 2010.

UNIX comprises all of the popular variants including AIX, HP-UX, Linux, OSF, Red Hat, Solaris and SCO.

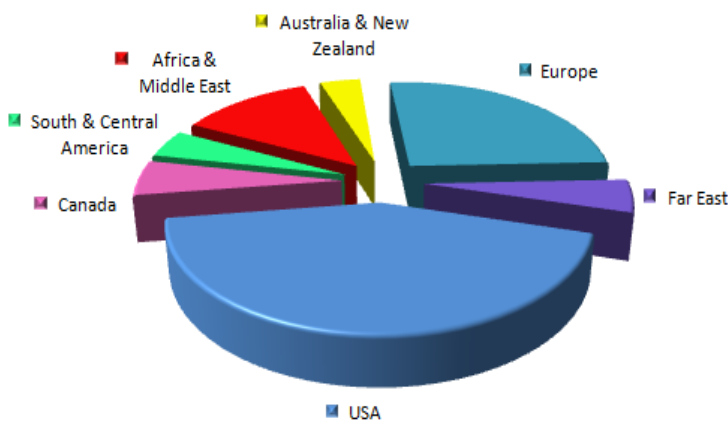
MS-Servers includes members servers running versions of the Windows OS from NT4 to Server 2012, while MS-Domains comprises Active Directory and Windows NT.

**What are the limitations of SekChek?**

- SekChek analyzes security at the OS level; i.e. does not analyze security at the application level;
- It does not support large mainframe environments
- Reports are available in English language only
- Reduced benefit where a third-party security product is installed using proprietary security files

**In which countries is SekChek used most frequently?**

**Usage by Region**



This regional comparison shows the distribution of SekChek usage from 2006 to 2010.

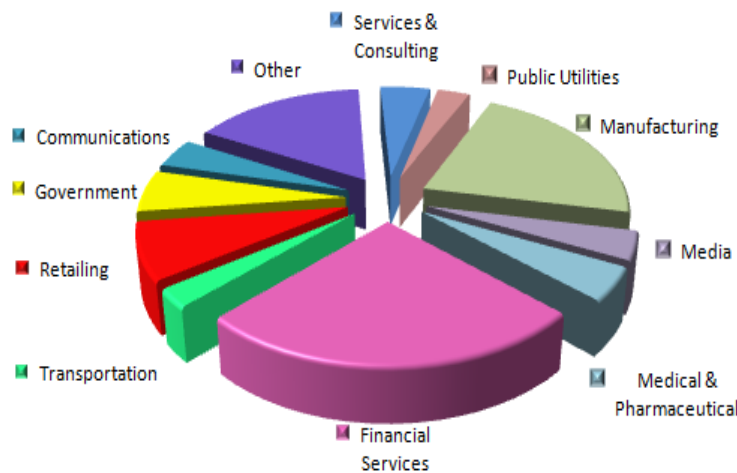
The distribution has been greatly influenced by the rate of adoption of SekChek by audit firms and their clients throughout the world.

In other cases, large multinational clients have successfully used the tool to centralize security reviews of systems located at their overseas offices and subsidiaries.

SekChek has been used by major corporations and government departments in 120 countries.

**How does SekChek compare against industry averages for security?**

**Industry Sectors**



This comparison shows the distribution of SekChek reviews across some of the major industries where SekChek has been used.

A unique statistics database permits SekChek to calculate real/actual industry averages for security. As new reviews are processed, summaries of the results (excluding client identification) are automatically added to a dynamic database containing more than 70,000 assessments and 50 million individual security measurements.

This allows you to see how well your security compares with other companies in your industry sector.

### How do I obtain the tool?

You can download the SekChek Client software at no charge from <http://www.sekchek.com>.

Or contact us at [inbox@sekchek.com](mailto:inbox@sekchek.com) for more information.

### How does the subscription payment plan work?

The most convenient and cost effective way to use SekChek is through a subscription. The pricing structure is very simple - the more SekChek's you subscribe to, the less each review costs.

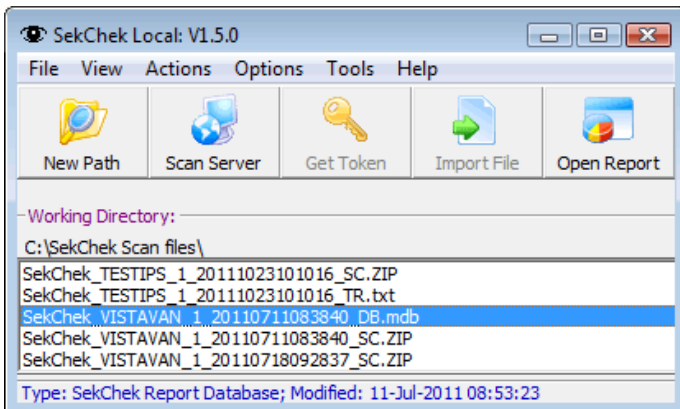
Prices are consistent across the entire SekChek service range (OS/400, NetWare, Windows, Active Directory & UNIX), so you only need purchase one subscription. You are free to choose and mix different SekChek services in the same subscription.

Once your subscription is confirmed you just send us your security files for processing any time you are ready. At the end of each month we will email you a statement indicating your usage of SekChek and we will issue a reminder just before your subscription is consumed.

*Subscriptions have no time limits and unused units never expire.*

### SekChek Local, another powerful audit tool from SekChek...

You may also be interested to hear about SekChek Local, which is a very cost effective solution for analyzing and benchmarking security on large numbers of Windows domains and servers.



Part of the same family of audit tools, SekChek Local scans an entire domain or multiple target systems across the network from a regular network attached PC – without the need to install agent software.

Because all processing is done locally on your PC, there is no requirement to send Scan data offsite for processing.

The fully automated Scan process prompts you to email a request for an Access Token, which is used to unlock the encrypted Scan file on your PC.

Output from the Local tool is written to an MS-Access database, which includes a very comprehensive set of graphical, summary and detailed reports.

Find out more about the Local tool by visiting [www.sekchek.com/sekchek-local-software.htm](http://www.sekchek.com/sekchek-local-software.htm). Email [inbox@sekchek.com](mailto:inbox@sekchek.com) to arrange a no obligation, free trial.

*SekChek is a registered trademark of SekChek IPS. All other trademarks are the property of their respective owners.*